

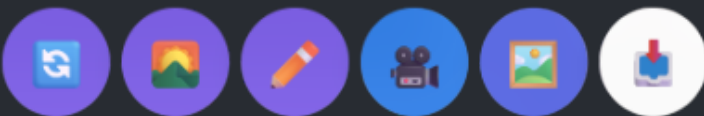
AI BRAND SOLUTIONS

AI Image Studio Guide

Getting Started

Our Tools

A short intro of our tools, how to use them.

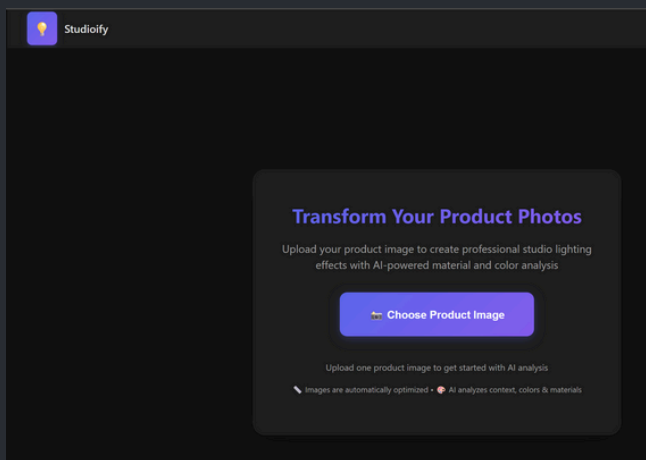


Stitching Edits

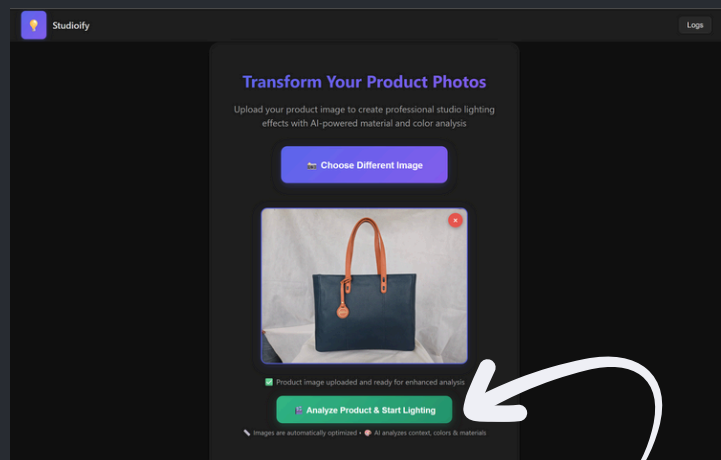
Intro

Image Studio is a one-stop AI image editing tool

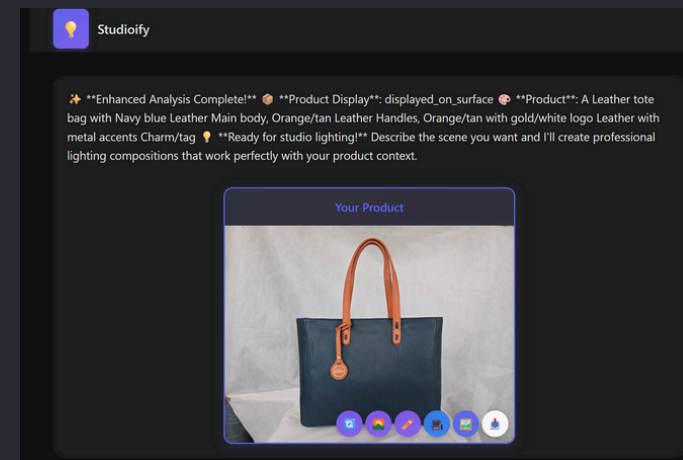
Get Started



Open your page



Upload your product and click analyse



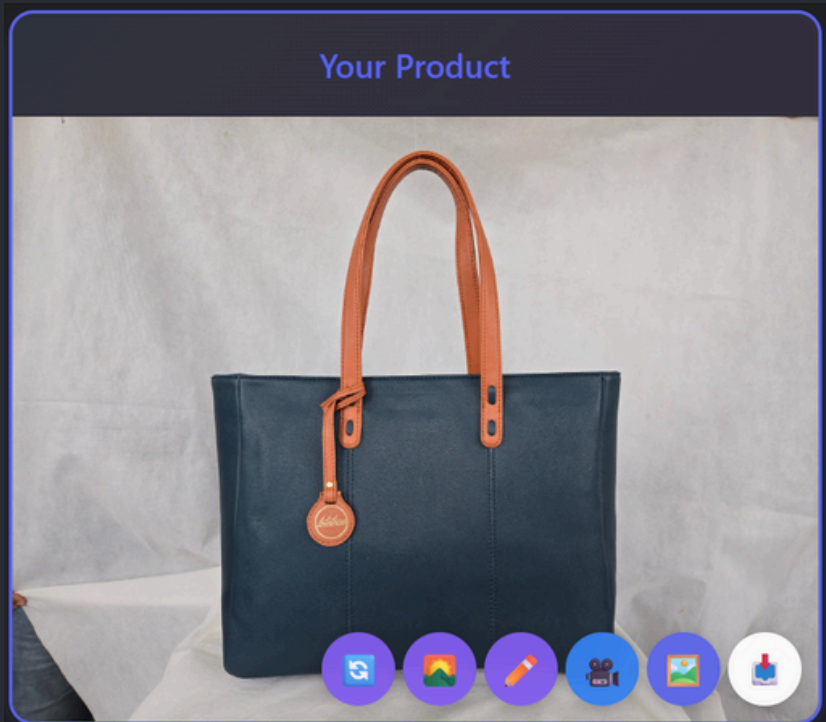
Your chat will open post analysis

Our Tools



Relight in Chat

Studio-grade relighting



Edit Image

Pixel level selection and editing



Image to Video

Create videos with your image as the start frame



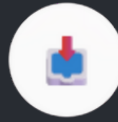
Reframe Image

Change your image aspect ratio with AI centering



Background Swap

Remove background or change without relighting



Download

To download this image / video

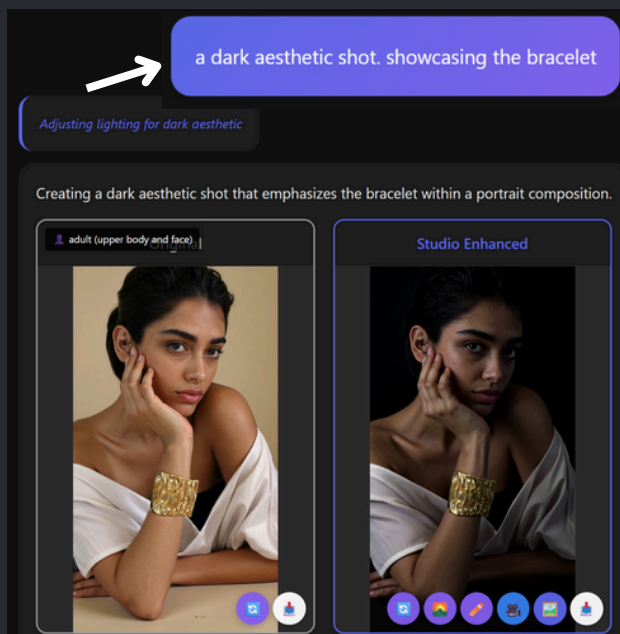
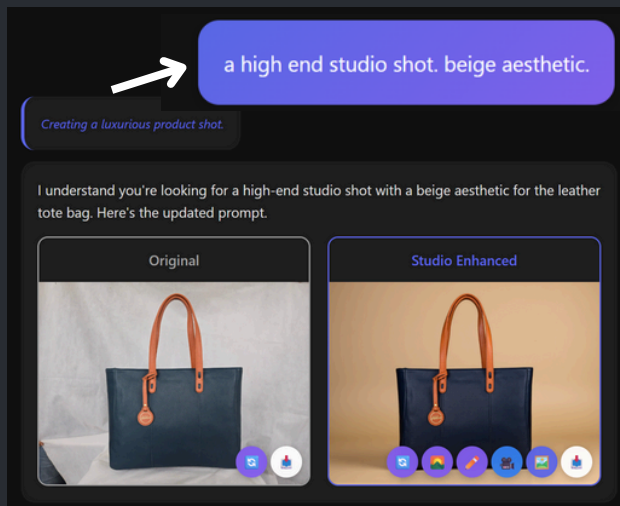


Continue from Here

Request the Relight Model for a new analysis.
(necessary for chat only)



Relight in Chat



In the chat you can ask the bot to relight your shot in a professional way.

Just describe what you want - the AI fills in technical details automatically.

Internal Prompt structure:

Product colors: eg Teal blue handbag with Orange tan Handles. / Shiny Gold Bracelet.

Background: eg. Minimalist background void / Blue sky background.

Surface (if present): eg. Minimalist Surface / orange wooden tabletop.

Lighting: eg. Volumetric lighting / softbox white lighting.

Aesthetic: eg. Magazine editorial style / iphone candid style / Coastal styling.

Our bot will contextually fill in details to get the best shot, so you can type in 1 word lines and it'll fill in the rest. You can override any details in the chat.

Troubleshooting:

You can directly tell the bot the color of your item, shade or change the color for the relight. eg. change the bracelet to silver and give me a stylish black background shot.

Pro tip:

You can copy an Internal Prompt from the logs section and use it for another shot.



Edit Image - Mask Tool

✦ Image Editor Paint the area you want to edit, then describe what you want to create

AI Assist

Erase

Mask Tools:

Brush

Undo

Erase

Redo

Lasso

Clear

Lasso Erase

Invert

Brush Size: 85px

Prompt

Upload Ref

E.g., 'a beautiful sunset sky',
'green grass and flowers'...

✦ Prompt Assist

🎨 Generate Edit

Original + Mask



To edit an image, we first need to make a selection. This can be a product, an element, a background, a person. A selection can be anything you would like to edit.

To make a selection you can do the following:

- 1.Brush tool - Paint on your image (green mask). Size editable.
- 2.Lasso tool - Close a lasso loop (photoshop style).
- 3.AI Assist - Clicking this will have AI assist with selection. hover over different areas to preview AI selections.

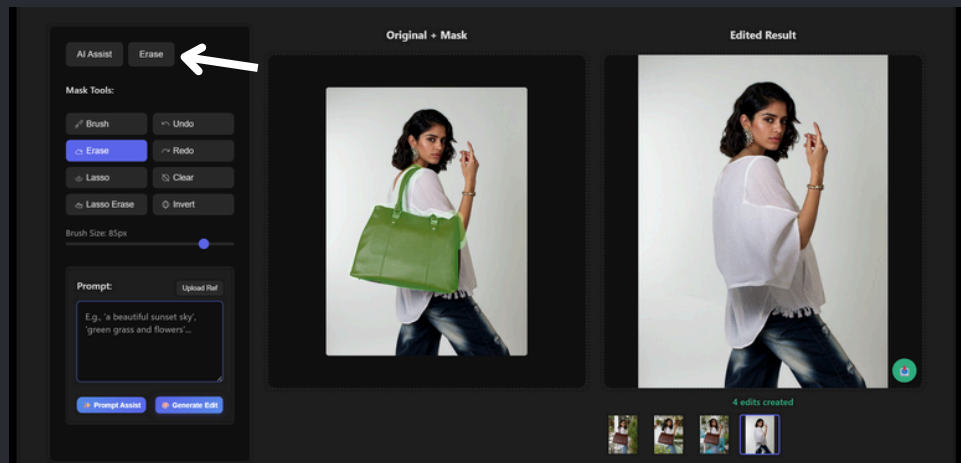
Undo, Redo, Clear, and Invert Selection allow for quicker masks.

Pro tip:

When selecting a product, select a bit outside its margins (larger mask), so that the Image generator doesn't affect the product, and has context of the world around it.

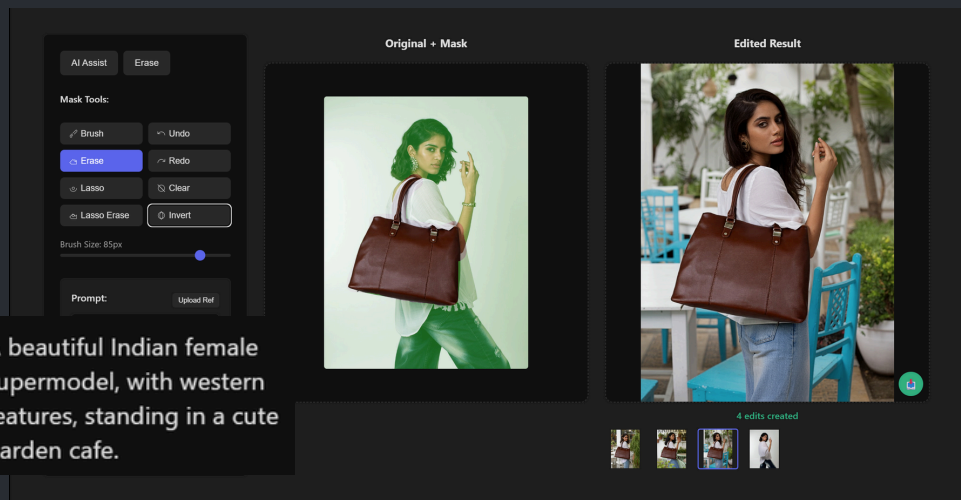


Edit Image - Making Edits



Once your selection is made, you can click the erase button on top, to delete that selected part.

This is useful for removing unwanted parts in an image, like additional jewelry on a model,



You can prompt the system for an edit.

for the prompt, you can type in what you want to see in the masked parts. Ideally don't mention the part you don't want to change.

If you need help with prompting the image model, especially with getting the layout to work, you can click [Prompt Assist](#) and the vision model will assist in updating your prompt.

You can edit this suggestion before creating a new edit.



Edit Image - Pro Tips



Selecting masks well will give you great results. keep “tell” body parts like ears, necks, fingers etc.

If you want to force a pose, leave small marks to guide image generation to your “non-negotiables”.

Plan your shot with the right background colors near your product so its easier later.



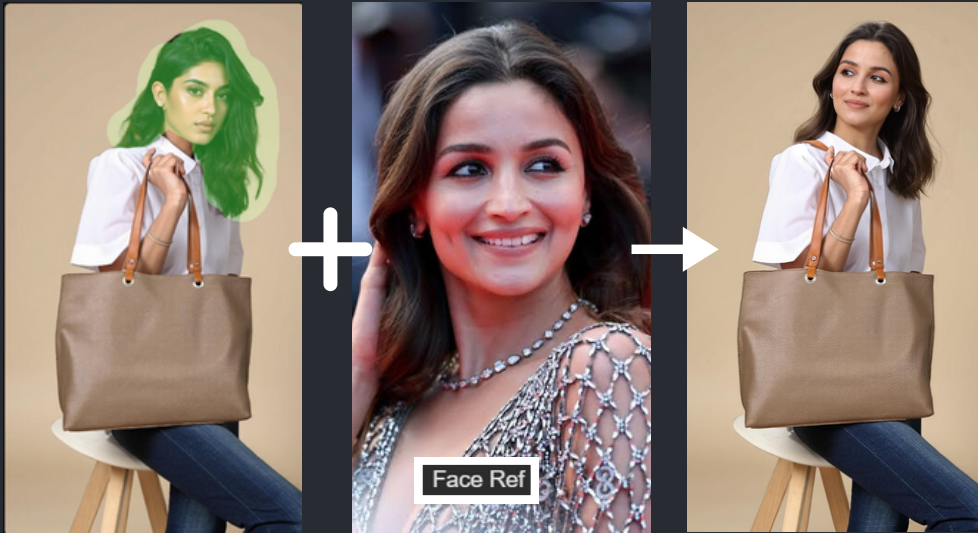
Using **Style Ref** will allow you to upload a ref image that copies a style reference. This helps set mood for your shots and makes your vision easier.

In this mode, it can help with model styling, look and make up as well.

Here you can see the way the aesthetic of the middle pic is used in the output. A great way to get a “model and shot aesthetic.”



Edit Image - Pro Tips



Using **Face Ref** will allow you to upload a ref image that copies a character. Face references recreate people.

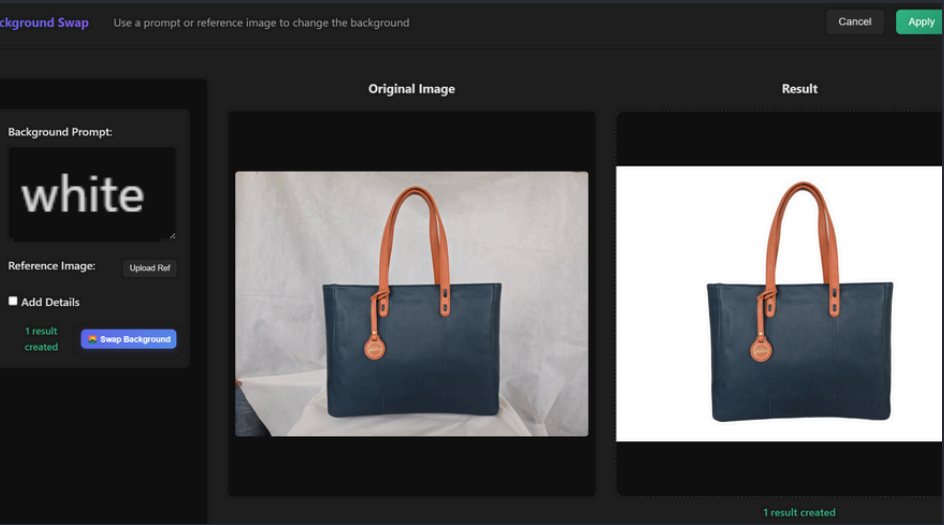
Prompt: This woman, this man, with changes to their hair and style will work to develop styling choices.

Here you can see the way the person of the middle pic is used in the output.

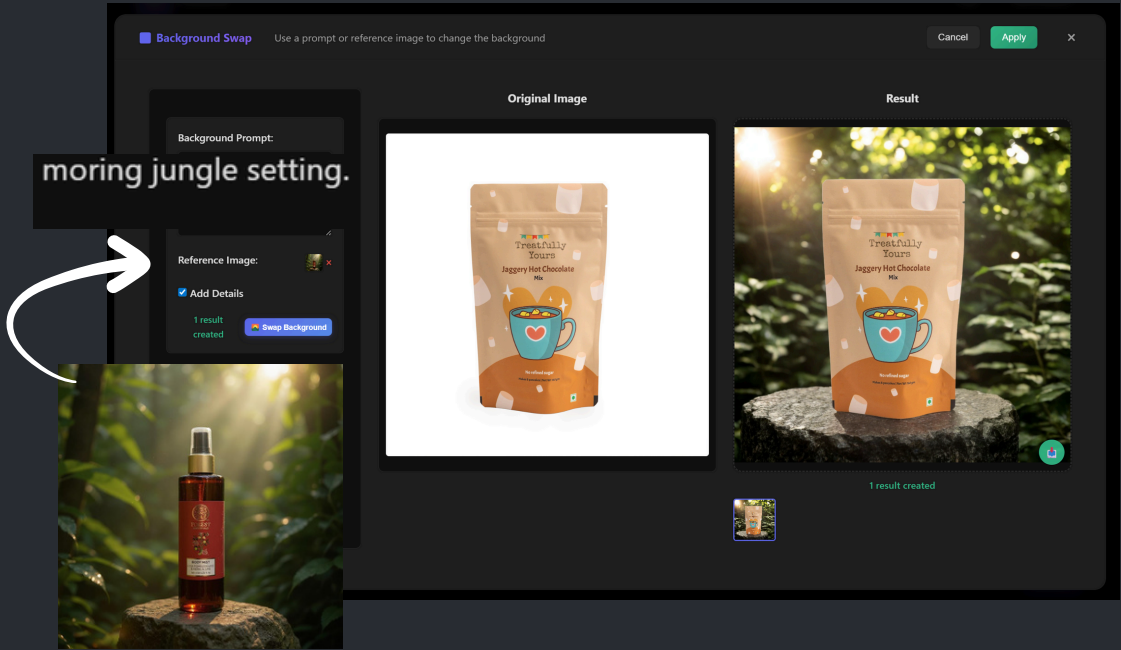
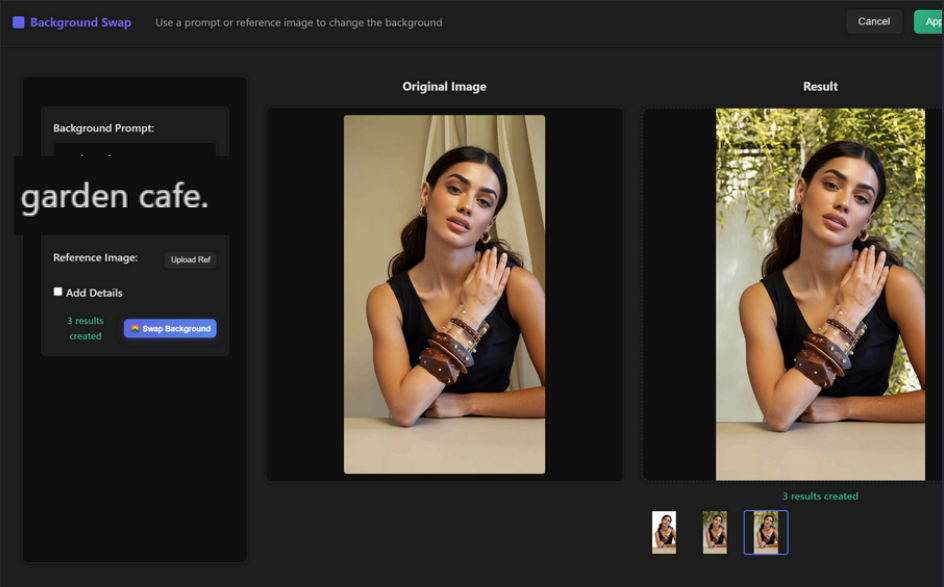
*Use with care.



Background Swap



Use text prompts (like 'white' for clean backgrounds) or **Upload Ref** for specific aesthetics. The **Add Details** button enhances your prompt with creative elements.





Reframe Image

Image Reframe

Select an aspect ratio to reframe your image

Cancel

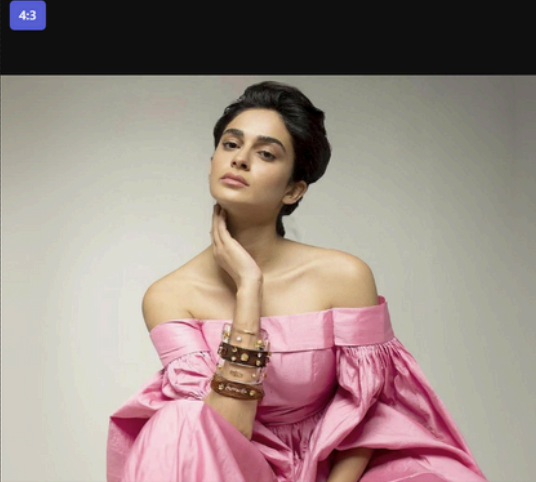
Apply Latest Reframe

×

Original Image



Reframed Result



Select Aspect Ratio:

4:3 (Standard)



1

reframe
created

Generate Reframe

Current Settings

Aspect Ratio: 4:3

Output Format: JPEG

Select your aspect ratio, from the dropdown, select generate edit to expand your image to your ref size.



Image to Video

Create Video

Generate a short video from your image

Cancel

Apply Video

X

Video Description:

Resolution:

720p

Duration:


5 seconds

☐ Fix Camera Position


This can take 5-15 mins

Generate Video

Original Image



Generated Video



Enter details and generate to see video here

Choose your duration and resolution, and then click to generate.

Stitching Edits

You can stitch together edits in any order to create the image any way you like. Each step builds on the previous result, allowing complex transformations through simple commands.



a dark
aesthetic
shot.



indoor
5 star hotel
room.
Golden light.



black
background.
highlight the
earring.

